

# Proposals for changes to local urgent and emergency care services

IN SOUTHPORT, FORMBY,  
AND WEST LANCASHIRE

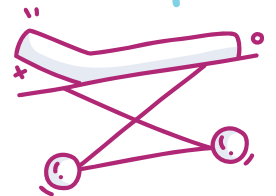
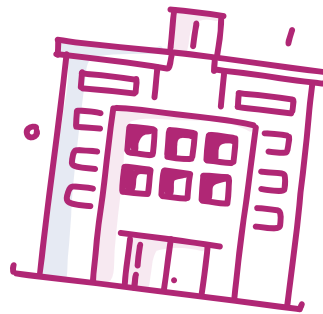
SHARE YOUR  
VIEWS. TAKE  
OUR SURVEY.



[bit.ly/sct200](https://bit.ly/sct200)

Consultation  
now open.

Have your say by  
Friday 3 October 2025



Public consultation summary booklet

NHS partners working together

This is our summary booklet. In it we outline our proposals, how they were developed, how different groups of people may be affected and what we can do.

We also explain how you can share your views and help shape decisions.

You have until 3 October  
to share your views.

Find out  
more



More detailed information can be found in our case for change and main consultation document, as well as our pre-consultation business case (PCBC). These can be found on the programme website at:

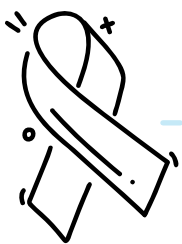
[www.yoursayshapingcaretogether.co.uk](http://www.yoursayshapingcaretogether.co.uk)

We are committed to giving you the information you need, the way you need it.

**Can't get online or you need documents in a format that suits you better?**

Get in touch and let us know how we can help. See back cover for contact details.

An easy-read version of this booklet, and of our survey, are also available.



# Why we need to change

We are the NHS in Southport, Formby and West Lancashire. We are looking at how to organise services to get the best of what we have today, and we want you to help.

There are five main pressures affecting many NHS services today which mean we cannot carry on as we are without making some changes. You can read about them in more detail in our [case for change](#), available on our website or on request

To help face these pressures, we need to make best use of the resources we have available to us.

Today, our accident and emergency (A&E) services are spread across two sites. Children's A&E is at Ormskirk Hospital, and adult A&E at Southport Hospital. That means a lot of extra resources are needed to deliver safe, excellent quality care.

## Five main service pressures



Our ageing population



Having the staff we need



Maintaining care quality standards



Buildings that are up to the job



Feeling the financial strain



# Looking at urgent and emergency care first

Urgent and emergency care services can have a big impact on many other NHS services. When they come under pressure, we can find it harder to have the right staff in place to keep other services running well. It can also mean more people needing hospital beds after being cared for in A&E.

Getting urgent and emergency care right helps the whole system flow better. That is why we are looking at it first.

**Our vision is to find a way to organise services that makes best use of NHS resources to...**

...provide safe and excellent quality care that can serve us well into the future...

...and to make sure our urgent and emergency care services are there for everyone, all day, every day.



That's not the case today. Since April 2020, our children's A&E at Ormskirk Hospital has been closed overnight. We had to take that difficult decision because service pressures meant we couldn't continue providing children with safe, round-the-clock emergency care at Ormskirk. This situation continues today. We must find a way to change this.

Last year, when we asked for ideas, many people said we should have children's and adult A&Es on the same hospital site. **We agree.**

**That is also how it is done at most general hospitals across the rest of the NHS in England.**



## What is urgent and emergency care?

A&E

**Emergency care**, available at A&E, is for life-threatening illnesses or accidents that need to be dealt with straight away.

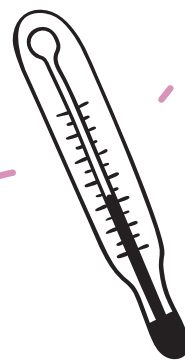
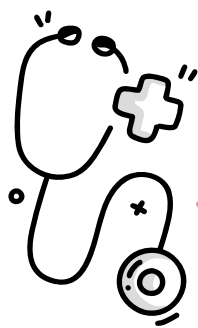


**Urgent care** is for when you need urgent attention for a non-life-threatening illness or injury.

You can get urgent care at a pharmacy, the out-of-hours GP, or at a walk-in or urgent treatment centre.

If you are not sure where to go, NHS111 can help by phone or online at [111.nhs.uk](https://111.nhs.uk)





## Why bringing our A&Es together makes sense

Our children have specific needs which is why we make sure we give them emergency care in a dedicated, child-friendly environment where they can receive age-appropriate care.

Locating the children's unit on the same site as the adult unit, can help improve how we deliver services that will benefit everyone.



Having the workforce for round-the-clock emergency care for adults and children.



Better anaesthetics cover for paediatric emergencies.



Reducing ambulance transfers for children needing trauma and orthopaedics and general surgery.



Better access to radiology services out of hours.



Better management of emergency blood tests and transfusions for under-16s.



Better ways of working for our pharmacy services.



## As well as the medical benefits, we would also...

- Improve rota management.
- Have more opportunities for staff supervision, training and workforce skills development.
- Be better equipped to respond to critical situations and emergencies.
- Have better access to a broad range of key specialist skills.

And the benefits that come with sharing resources across departments would mean we would be better placed to manage peaks in demand for care.

Most importantly, current pressures mean we cannot continue as we are today without a further deterioration in standards and outcomes for patients...

...and we are not going to allow that to happen.

**With your help, we are confident we can find the solutions we need.**



## Exploring different options

We heard lots of ideas for how to organise urgent and emergency care services in our area.

These were thoroughly assessed by a review panel made up of public and patients from across the Southport, Formby and West Lancashire area, local community and voluntary groups, and NHS experts.

The panel looked at all the options, using available evidence for each to consider resources required, the time needed to implement and how well they could meet programme goals.

This narrowed the options down to two which were then looked at in more detail.

One is for all our children's and adult A&E services to be at Southport Hospital...

...The other is for services to be at Ormskirk Hospital.

Reviewers thought there would be some or minimal difference in how each option would...

- Achieve the desired goal of providing safe and excellent quality services, available to everyone all day, every day.
- Affect access to healthcare for people from different backgrounds and communities.
- Help tackle the staffing challenges we face.
- Fit with what is happening in the wider NHS.
- Impact the environment.
- Impact on people travelling to A&E.



The biggest difference was that the Southport option would need just one other service to move with it...

...The Ormskirk option would mean relocating at least seven other services.

## Southport option

1,800m<sup>2</sup>  
needed for  
**1** service  
relocation

Relocations mean some disruption to staff, patients and visitors across the wider hospital.

The scale of relocation work also has a significant impact on costs, time to deliver and space required for development.

### Southport option

1,800m<sup>2</sup>

5 years

£33.1 million

### Ormskirk option

8,800m<sup>2</sup>

7 years

£91.3 million

## Ormskirk option

8,800m<sup>2</sup>  
needed for  
**7+** service  
relocations

Based on this evidence, the panel recommended a future public consultation should include...

...a preferred option for locating services in Southport, as well as an alternative option for bringing services together at Ormskirk.



Read more about how options were developed and reviewed, and the evidence used by the panel, in our [main consultation document](#), as well as our [pre-consultation business case \(PCBC\)](#) and supporting documentation.

Can't get online or you need documents in a format that suits you better? [Get in touch](#) and let us know how we can help. See back cover for details.

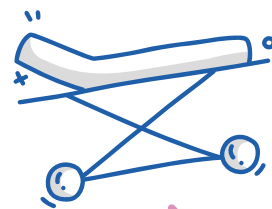
# What our future A&E could look like

Following the advice of our options review panel we are putting forward two different options.

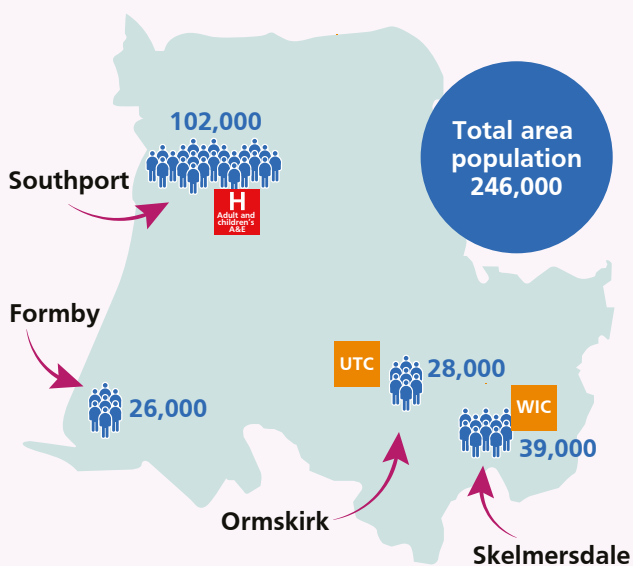
**Our preferred option is Southport because we believe the evidence shows it is the best way to achieve our goals.**

However, we remain open to new views and perspectives. Listening to the people who use and rely on our services will help us make the best choices.

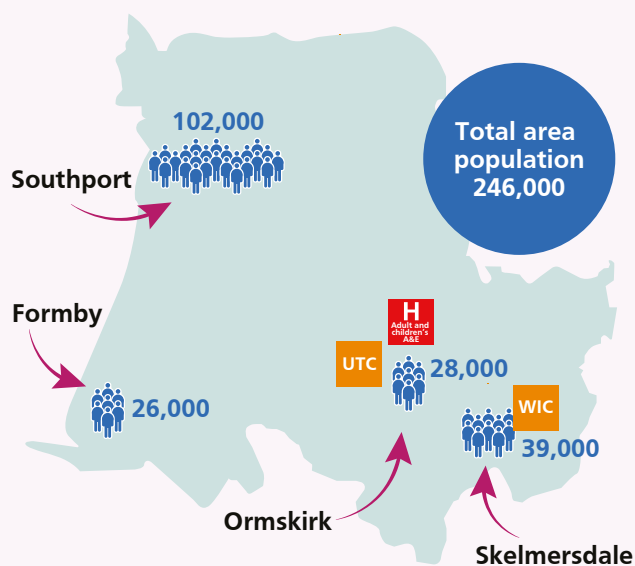
**The options would set up urgent and emergency care services across our area in the following way...**



## Southport option



## Ormskirk option



## On the hospital site...



### ...in both cases proposals would

- Make sure the children's A&E has a dedicated entrance, waiting area and treatment areas.
- Allow the current A&E units to continue operating during construction.
- Carry out all refurbishment works to modern standards.
- Provide expanded parking capacity.

### The Southport option includes...

- Today's adult A&E facility with 365m<sup>2</sup> newly refurbished additional treatment space.
- A newly refurbished children's A&E and inpatient facility of similar size to the current unit at Ormskirk Hospital.
- A new ambulance entrance dedicated to children's A&E.
- Up to 354 new parking spaces.

### The Ormskirk option includes...

- A newly refurbished adult A&E with a 10% larger floor area than the current Southport facility.
- A new ambulance entrance for adult A&E.
- Today's children's A&E unit, which remains in generally good condition.
- Up to 200 new parking spaces.



Find more detailed information on proposals in our [main consultation document](#), as well as our [pre-consultation business case \(PCBC\)](#) and supporting documentation.

Can't get online or you need documents in a format that suits you better? **Get in touch** and let us know how we can help. See back cover for details.

# How people could be affected

We recently carried out an **Impact Assessment** to help understand how different groups of people may be affected by proposals and which groups we may need to hear more from.

Whatever the outcome of this consultation, we know that some services will move, and some people or communities may feel they are losing out. In our big conversation last year people let us know about several concerns...

...We take these concerns seriously and intend to do all we can to address them.

## Impacts for people needing to travel to A&E

Our data shows that patients and staff across both hospitals combined live relatively closer to Southport than Ormskirk. As NHS advice is for people needing to go to A&E to either be driven or call 999 we looked at how both car and ambulance journey times may be affected. Here's a summary of what we learned.

### Car and ambulance travel time impacts

- Most people (9 out of 10) travelling to adult A&E in Southport last year would have taken longer driving to Ormskirk.
- Almost half of people who drove to children's A&E last year would have taken longer to get to Southport.
- The predicted increase in ambulance travel time would be three times greater with the Ormskirk option than the Southport option.

### What we can do

- Support local authorities and public transport providers to develop services that reflect the needs of our patients and staff.
- Provide a free-of-charge shuttle bus service between hospital sites.
- Set up a travel advisory group.



# How people could be affected

## Impacts felt by patients at our hospitals

Last year, we asked people to share their experiences of A&E services at both sites to help us understand what is needed when designing future services.

## Concerns people shared

- The size, quality and accessibility of waiting areas and the impact of rising patient numbers.
- Patient welfare concerns, especially for more vulnerable groups such as people with disabilities or frailty related conditions, those with specific sensory needs, and people suffering with poor mental health.

## What we can do

- Proposals include modernised entrances, new ambulance drop-off areas, expanded waiting and treatment areas and increased parking capacity.
- We will continue to work with our patient advice and liaison service (PALS).
- We will aim to further reduce our reliance on hospital-based services by providing urgent care options closer to where people live.



Find more about the impacts of proposals in our [main consultation document](#), as well as our [Equalities and Inequalities Impact Assessment](#).

Can't get online or you need documents in a format that suits you better? [Get in touch](#) and let us know how we can help. See back cover for details.

## What we are asking

We want to hear your views on how proposals could make best use of local NHS resources to meet the challenges we are facing...

...and deliver safe and excellent quality services, available to everyone all day, every day.

We want to build on what we have already learnt to help us make the right choices.

**All views, thoughts and contributions are welcome, but especially those that help:**

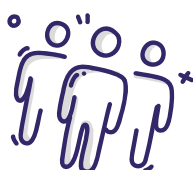
- Make sure we have all relevant, available evidence.
- Understand how people might be affected and what we can do to help.
- Make sure that the voices of people who use and rely on our services are heard and accounted for in decision-making.

We want people to think about what is best for the whole area of Southport, Formby and West Lancashire.



Finding the best solutions will take time and effort. We will work as hard as we can to make it happen, but we cannot do it without you...

...By working together, we are sure we can get this right.



There are lots of ways to get involved. You can take our survey, sign up to our newsletter or discover the latest news at [www.yoursayshapingcaretogether.co.uk](http://www.yoursayshapingcaretogether.co.uk)

We will bring the conversation to where you live through public events and discussion groups where you can join in.

If you, or someone you know, would like a printed copy of this booklet, please let us know. We will also send a printed copy of the survey, and a postage paid return envelope.

**Anyone is welcome to contribute their views, but we especially want to hear from:**

- Patients, families and carers.
- Underrepresented groups and communities.
- People from protected characteristic backgrounds as defined in the Equalities Act 2010.
- Our staff and their representatives.
- Community, voluntary and faith groups.
- Organisations who work with or depend on the local NHS.
- People from neighbouring areas who may use and rely on NHS services here.

**Please share this booklet with any people or groups you think may want to get involved... or let us know so we can get in touch.**

**Our promises to you.**

We will always...

- Give you the facts you need, the way you need them.
- Listen, try to understand, and always get back to you.
- Be open and honest. We will never hide anything.

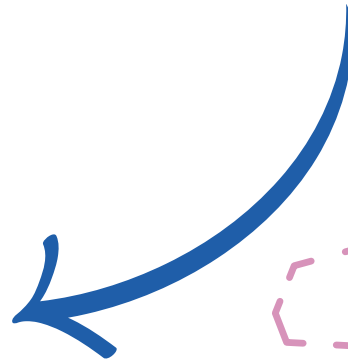


# Help shape local urgent and emergency care that's fit for the future

SHARE YOUR  
VIEWS. TAKE  
OUR SURVEY



[bit.ly/sct200](https://bit.ly/sct200)



You have until 3 October  
to share your views.

## Get in touch

To learn more about the programme, stay up to date with latest news and developments and discover ways to get involved and to have your say, visit the Shaping Care Together website, or contact us directly.



[www.yoursayshapingcaretogether.co.uk](http://www.yoursayshapingcaretogether.co.uk)



Leave us a message on 0151 478 7929



[sct.getinvolved@merseywestlancs.nhs.uk](mailto:sct.getinvolved@merseywestlancs.nhs.uk)



Shaping Care Together, Communications  
Dept., Whiston Hospital, Warrington Rd,  
Rainhill, Prescot L35 5DR

**The information  
you need, the way  
you need it.**

Get in touch and let us  
know how we can help.